



Dr Melvin Sia
Malaysia

Midline Diastema Closure using Direct Cosmetic Restorations

30 years old male patient visited the clinic and with a desire to close his upper midline diastema. After a detailed clinical examination, the patients were given multiple treatment options including short orthodontics to micro-invasive porcelain. However, the patient has to go for a photo session the next day, it was decided to close the gap using direct cosmetic restorations using composite resin materials "Beautiful II LS" from Shofu Inc, Japan.

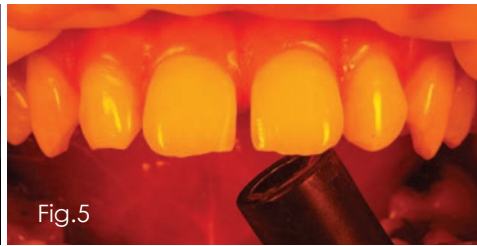


Fig. 1 Intraoral retracted view before treatment **Fig. 2** Intraoral retracted close-view **Fig. 3** Application of 37% phosphoric acid on tooth no 21 for proper enamel etching **Fig. 4** Application of FL Bond II bonding agent, Shofu, Inc, Japan) **Fig. 5** Light curing of bonding agent **Fig. 6** Free hand application of Beautiful II LS, INC shade (Shofu, Inc Japan) **Fig. 7** Composite resin layer was smoothen using brush **Fig. 8** After composite resin layering the tooth no 21 was cured properly **Fig. 9** Tooth no 21 was isolated with Teflon tape and tooth no 11 was etched with 37 % of phosphoric acid **Fig. 10** Application of FL Bond II bonding agent, Shofu, Inc, Japan) **Fig. 11** Sectional matrix was used to allow build up of the mesial portion of tooth no 11 **Fig. 12** After layering and proper curing the restoration the finishing and polishing process was initiated using super fine diamond point (Shofu Inc, Japan)



Fig.13



Fig.14



Fig.15



Fig.16



Fig.17

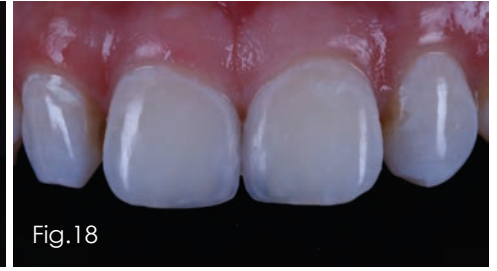


Fig.18



Fig.19



Fig.20



Fig.21

Fig. 13 Finishing with violet SuperSnap disc (Shofu Inc Japan) **Fig. 14** Pre polishing with One Gloss Midi point (Shofu , Inc. Japan) **Fig. 15** Polishing with Super snap Xtreme Green (Shofu Inc. Japan) **Fig. 16** Interproximal surfaces polishing with Super Snap strips (Shofu Inc, Japan) **Fig. 17** Checking the restorations quality at different angles **Fig. 18** Intraoral retracted close up view of the restorations **Fig. 19 & 20** Tooth no 11 and 21 before and after the restorations **Fig. 21** Smile after closing the midline diastema

n-MAG
www.nmagnepal.com

THE BEST SMILING FACE CONTEST

SMILE IS THE BEST REMEDY
for emotional healing
The COVID-19 pandemic has robbed us for our smiles and giggles, concealing them behind the masks of distress. However, we all know smiles are contagious to relieve anxiety and promote happiness in the society. To remind you to SMILE gracefully once more, we have organized an online SMILING FACE CONTEST. Send your gleeful smile and support our mission of "SMILING TO MAKE OTHERS SMILE"

smile™
makeup

- FEATURED ON THE COVER OF SMILE MAKEUP INTERNATIONAL MAGAZINE
- 2 YEARS BASIC DENTAL TREATMENT FREE @ VEDIC SMILE PVT LTD
- FREE SMILE MAKEUP TREATMENT @ VEDIC SMILE PVT LTD

4428367, 9851128367 (or SMS) Vedic Smile Pvt. Ltd
Baluwatar (Near Chinese Embassy), Kathmandu, Nepal

For more Detail : www.smile-makeup.com

Smart Solutions for Challenging Restorations

Aesthetics Powered by

SHOFU BEAUTIFIL II LS

For more information, contact your nearest Shofu Dealer TODAY !

SHOFU SHOFU DENTAL ASIA-PACIFIC PTE. LTD.
www.shofu.com.sg

Official Partner
miCD
Minimally Invasive Cosmetic Dentistry

Do No Harm Cosmetic Dentistry.