

Missing & Peg-shaped Laterals

A middle aged (45 years) patient requested modification of a peg shaped lateral incisor. Upon examination a missing lateral incisor (#12), peg shaped lateral incisor (#22) and hypocalcified spots in the upper central incisors with broken incisal edges were noted. The shade distribution and surface texture of anterior teeth were not uniform.

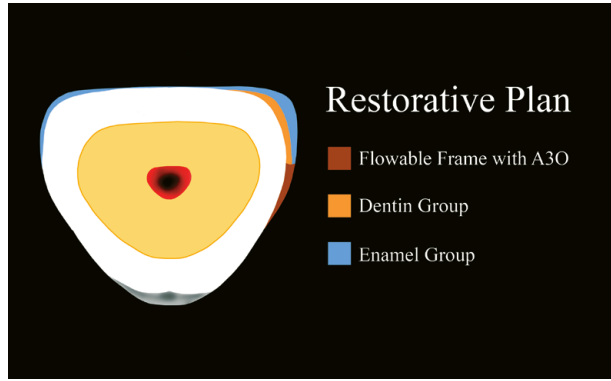
After his dental problems and cosmetic solutions were explained, the patient requested for a cost-effective treatment option. Therefore the case was completed with direct bonding and cosmetic contouring. The patient preferred to maintain the white spots on the central incisors. The main clinical challenge in this case was to obtain uniform surface texture and shade of all maxillary anterior teeth.



1. Peg shaped tooth #22, missing tooth # 12 with uneven incisal edges of teeth #11 & #21.



2. Restored tooth #22 with direct cosmetic veneer and cosmetic contouring on #11, #21, #12.



3.



4. Before treatment.



5. Roughen surface of tooth #22 with a Diamond Point #102R.



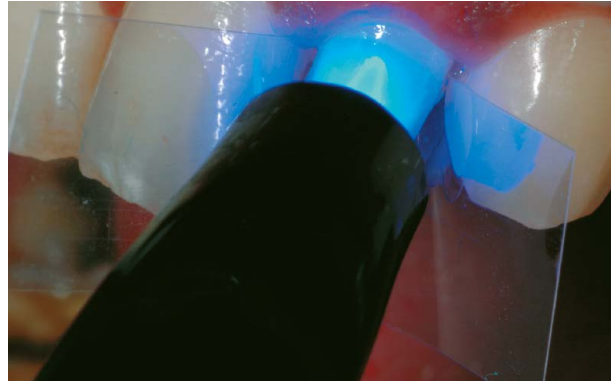
6. Protect the adjacent teeth with a metal strip and etch with phosphoric acid.



7. The etched enamel surface with a frosted appearance.



8. Place a plastic strip and apply the bonding agent.



9. Light-cure the binding agent for 10sec.



10. Inject the flowable resin to create the frame.



11. Build-up the dentin (#A3) on the frame at distal margin.



12. Build-up the final dentin shape with (#A3).



13. Build-up the enamel layer (#INC) incrementally.



14. Smoothen the enamel surface with a brush and light-cure.



15. Finish the restored surface with Diamond Point #F104R.



16. Fine finish the labial surface with Diamond Point #SF215.



17. Contour the incisal edge of tooth #22 with Super-Snap black disk.



18. After restoration, note the colour, gingival shape and texture of tooth #21.



19. Finally super polish the surface with Super-Snap red disk.



20. Polish interproximal area with Super-Snap polystrips.



21. Use a diamond polishing paste with a Buff disk to achieve the final gloss.



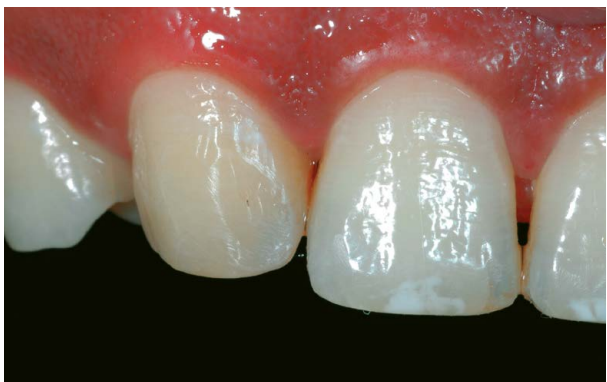
22. Mark the area for contouring on Teeth #13, #11 & #21.



23. Contour uneven incisal edges with Diamond Point #102R and maintain the white spots.



24. Finish and polish teeth with OneGloss Midi Point and super polish with Buff disk.



25. Tooth #13 is transformed to mimic a lateral incisor.



26. Teeth #11, #21, #22 see after contouring and restoration.



27. Upper 4 anterior teeth seen after cosmetic contouring & restoration.