

Anterior Fracture

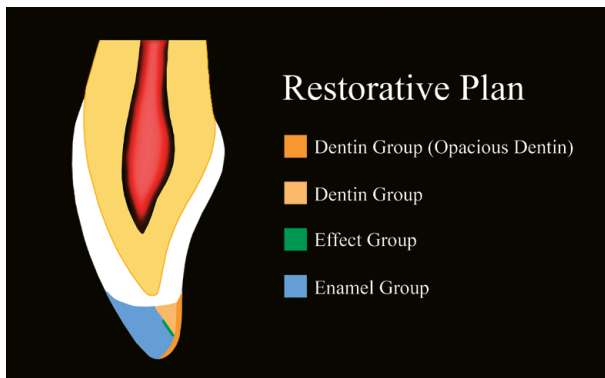
A 27 year old businessman presented with a chipped upper anterior tooth. After examination and shade selection the chipped central incisor (#21) was restored using the direct silicone template technique. The main clinical challenge of this case was to obtain adequate retention with beveled margins.



1. Incisal fracture on tooth #21.



2. After placing a direct cosmetic restoration.



3.



4. A clear view of the fracture.



5. Place a mock-up restoration with composite to prepare the silicone template.



6. Etch the enamel surface with phosphoric acid.



7. Remove the mock-up restoration.



8. Cut the the silicone impression.



9. Check the fit of silicone template in the mouth.



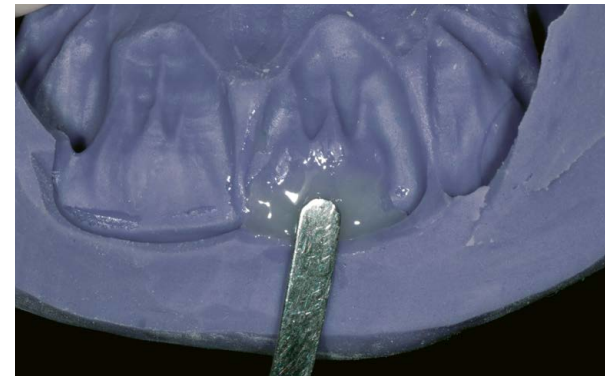
10. Prepare the tooth with a Diamond Point #F104.



11. Protect the adjacent tooth with a metal strip and etch the enamel.



12. Apply the bonding agent and light cure.



13. Dispense Opacious Dentin (#A30) onto the silicone template.



14. Position the silicone template to achieve an accurate lingual matrix.



15. Lingual matrix after light-curing.



16. Build-up dentin layer (#A2) on the lingual matrix.



17. Apply a yellow stain to mask the fracture line.



18. Apply a thin layer of enamel (#INC) over the stain.



19. Light cure the restoration before finishing and polishing.



20. Polish the surface with Super-Snap polishing disk.



21. Restored tooth #21 after super polishing.

~ Case & photography by Dr. Sushil Koirala