

# Aesthetic Restoration of Severely Crowded Anteriors

55 years old female patient visited the dental office with a chief complaint of pain in the upper front tooth. Clinical examination and IOPA radiograph revealed badly decayed tooth 11 with multiple class 3 cavities on tooth #12, 21. This complex case was managed based on a phased treatment approach in 3 stages.

## Phased Restorative Approach

Appointment 1 (Blue Rubber dam) – Removal of decay on the distal surface of tooth #11 was done followed by root canal treatment. Due to the extent of the caries lesion the mesial class 3 cavity was left untouched to avoid fracture of the crown during the course of the treatment. Removal of decay from tooth #12 was done both mesially and distally.

Appointment 2 (Black Rubber dam) – Fiber post was bonded using Para core followed by restoration of tooth #11 distal surface and mesial surface of tooth #12 using a Bioclear matrix.

Appointment 3 (Military green rubber dam) – Remaining Class 3 restorations on tooth #11 and #21 were completed with final finishing and polishing of restorative surfaces to achieve the natural aesthetics and enamel luster.

The patient was strictly advised to use a water flosser to maintain good oral hygiene which is imperative for the longevity of the restorations specially with crowded anterior teeth. A minimally invasive direct restorative approach was implemented at this stage as the bite was atraumatic and free from interferences in dynamic occlusion.



9. Bioclear Matrices placed and Beautiful Injectable X shade A2 injected.



10. Build-up completed with the convenience of Inject & Shape.



11. The excess material removed with a fine diamond bur.



12. After removal of the excess material.



13. After finishing the restoration on tooth #11

## Appointment 3



14. Cavity preparation on mesial surface of tooth #11 & 21.



15. Restoration of the mesio-cervical area with Beautiful Injectable X shade A2O.



16. Bioclear matrices placed and restoration of tooth #11 & 21 were done simultaneously with Beautiful Injectable X shade A2.



17. Well contoured restorations with minimal excess.



18. Finishing and polishing all the restored surfaces on tooth #11, 12 & 21 with Super-Snap Xtreme disk system and OneGloss.



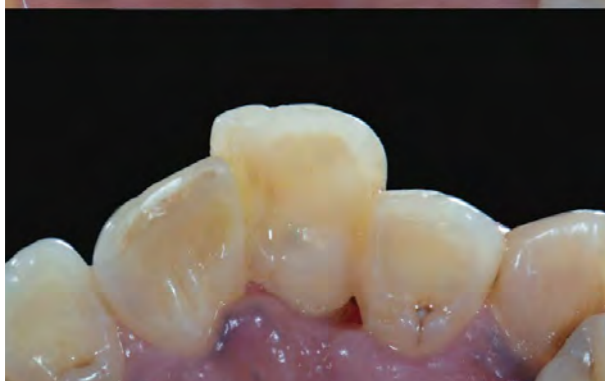
19. After removal of rubber dam and super polishing with Diamond Polishing paste and Super-Snap disk.



20. Recall visit after one week.



21. Visible healing of the distal papilla after one month post-op.



1 & 2. Palatal and Labial view of before and after restoration



3. After removal of caries in tooth #11, 12 and you need patience to invert the rubber dam in such a deep cavity margin.

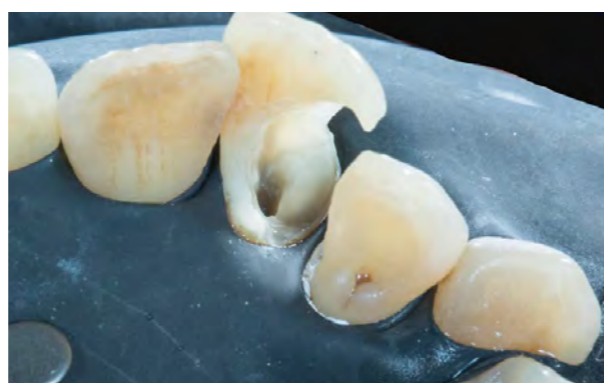


4. After careful insertion perfect seal achieved with teflon tape which rolled like a retraction cord before root canal treatment.

## Appointment 2



5. Cavity walls were prepared for the adhesive procedure before placement of Post & core on tooth #11 after RCT. Post selected due to severe destruction of palatal surface.



6. Palatal view after air abrasion and acid etching on Tooth #11



7. After bonding the post, full anatomical build-up on tooth #11 with Beautiful II LS shade A2O.



8. Palatal view of the free hand build-up of tooth #11 after bonding the post.